

ATTACHMENT F
TRANSIT DROP DATA SHEET

This page intentionally left blank.

DATA SHEET

Customer	<u>Global Election Systems</u>			WYLE LABORATORIES
Specimen	<u>AccuVote-TS R6 DRE Voting Machine</u>			
Part No.	<u>AVTS-R6</u>	Amb. Temp.	<u>≈ 74°F</u>	Job No. <u>46058</u>
Spec.	<u>FEC Standard</u>	Photo	<u>--</u>	Report No. <u>46058-01</u>
Para.	<u>7.3.2.2</u>	Test Med.	<u>--</u>	Start Date <u>August 18, 2001</u>
S/N	<u>2009-019</u>	Specimen Temp.	<u>≈ 74°F</u>	
GSI	<u>No</u>			
Test Title	<u>Transit Drop</u>			

Criteria: The AVTS-R6, weighing less than 100 lb. and its largest dimension as packaged for shipment under 36 inches, shall be dropped from a height of 48 inches. A total of 26 drops shall be performed. One drop each shall be performed on each face, edge and corner.

The AVTS-R6, packaged within a Pelican shipping hardcase was subjected to the 48-inch drop test criteria.

Post-Test Inspection: The AVTS-R6 was removed from its shipment container and powered but failed to energize. The exterior and interior were examined for any obvious signs of degradation and/or damage. The unit was returned to Global Election Systems for failure analysis. Global Election Systems personnel reported that two connections had broken free from the video module. The first was the backlight inverter cable and the second was the touch screen connector. The disconnection of the backlight cable caused the display data to not energize and the non-responsive touchscreen was due to the touch screen connector shearing off from the LCD board. Global reported that the following processes would be implemented on future builds to ensure this anomaly does not reoccur. The backlight cable connector will be secured to the LCD board Rev 2.0 connector with an application of RTV. The touch screen connector mounting pads on the LCD board Rev 2.0 had already been identified as a problem and a solution had already been implemented. Global will secure the LCD connector directly to the LCD board in lieu of through mounting pads.

Criteria: It was requested by Global Election Systems that the AVTS-R6 be subjected to the Florida Transit Drop Requirements. The AVTS-R6 configured for precinct transportation, i.e., mounted within a Global Model 0001 Voting Booth/Carry Case, shall be dropped on each corner for a total of eight drops. Each drop shall occur from a height of 12 inches.

Post-Test Inspection: The AVTS-R6 was removed from the Voting Booth and powered and remained fully functional.

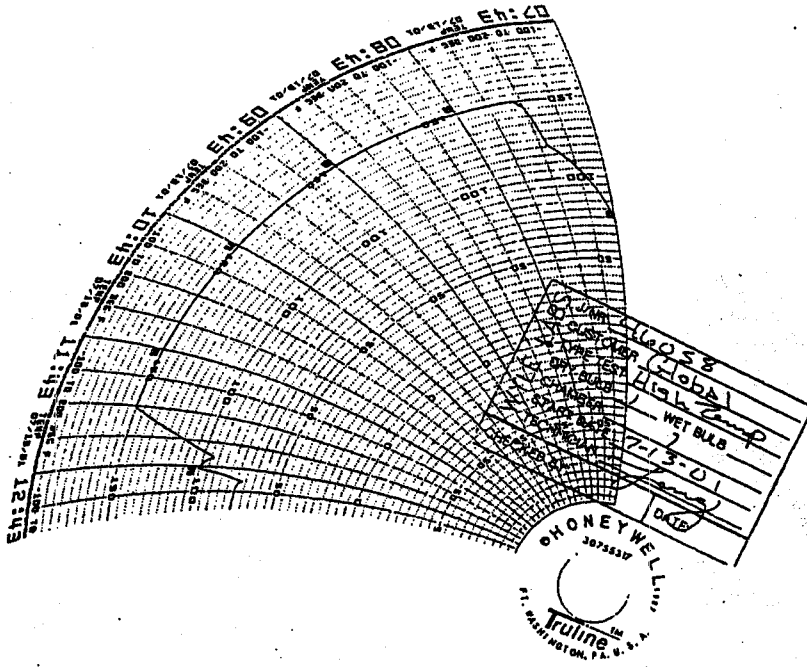
Tested By *John Bates* Date: 8/18/01
 Witness _____ Date: _____
 Sheet No. 1 of 1
 Approved *[Signature]* 9.18.01

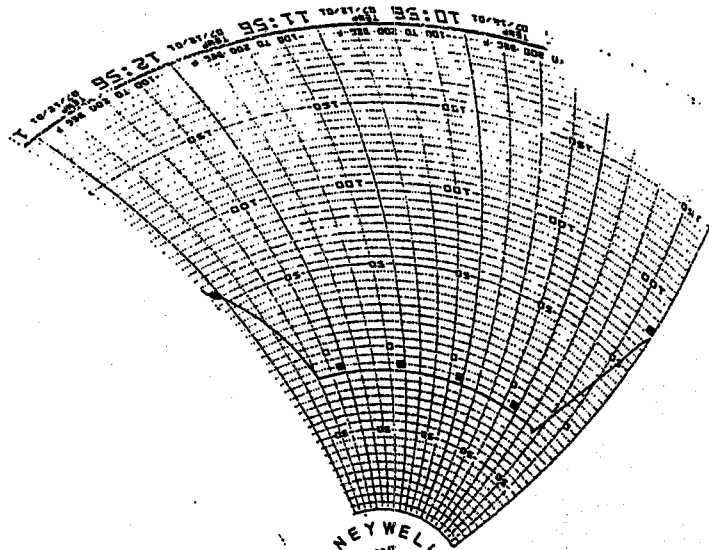
Notice of Anomaly: 1

This page intentionally left blank.

ATTACHMENT G
LOW/HIGH TEMPERATURE THERMAL
CIRCULAR CHARTS

This page intentionally left blank.





Checked by:	DATE:
WYLE LABS	JUN 5 1958
CUSTOMER:	GLOBAL
TYPE TEST:	GLOBAL
CHAMBER:	LOW
DRY BULB:	70
WET BULB:	60
START DATE:	5/27/58
TECHNICIAN:	W. J. ...

ATTACHMENT H
VIBRATION TEST DATA SHEETS

This page intentionally left blank.

VIBRATION TEST DATA SHEET

Customer Galchev Specimen AVTS-R6 DRE COSSIDA MACHINE
 Job No. 46058 Part No. AVTS-R6 Specimen Temp. LAB D.M.D.
 GSI Yes No Method 514.3 S/N _____ Photo Yes No
 Procedure _____

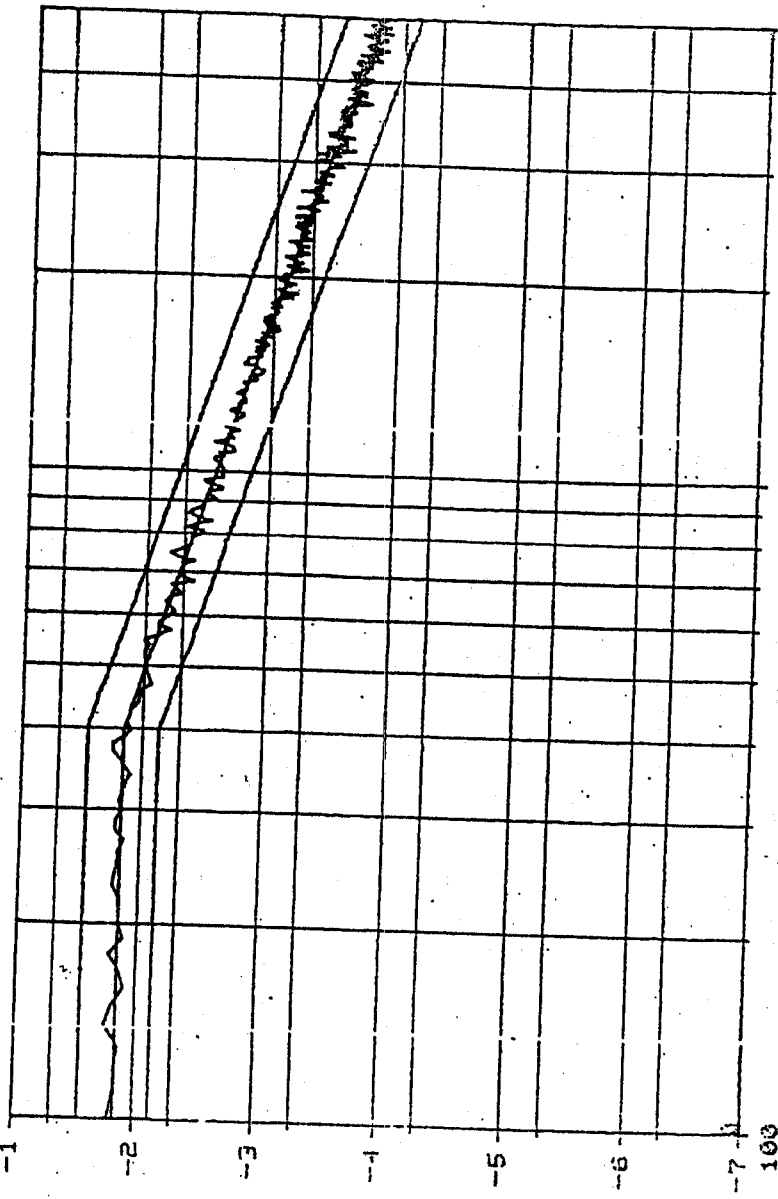
Test Title Vibration

Date	Time	Axis	Temp (F)	SINUSOIDAL			RANDOM			TOTAL Accel. (grms)	Test Time (min)	COMMENTS	NAME
				Freq. (cps)	Disp. (in)	Accel. (g)	Freq. (cps)	PSD (g/cps)	Slope (dB/oct)				
7/17/01	13:37	Long	AMB	10-40	0.15		500	0.0015	1.04	30	P.01 Resonance Vibration	Dm	
7/17/01	14:21	Lat	AMB	10-40	0.15		500	0.0015	1.04	30	P.02 Resonance Vibration	Dm	
7/18/01	10:54	Vert	AMB	10-40	0.15		500	0.0015		30	P.03 Resonance Vibration	Dm	

Job No. 46058
 Report No. 46058-01
 Date 7.17.01
 Page 1 of 1

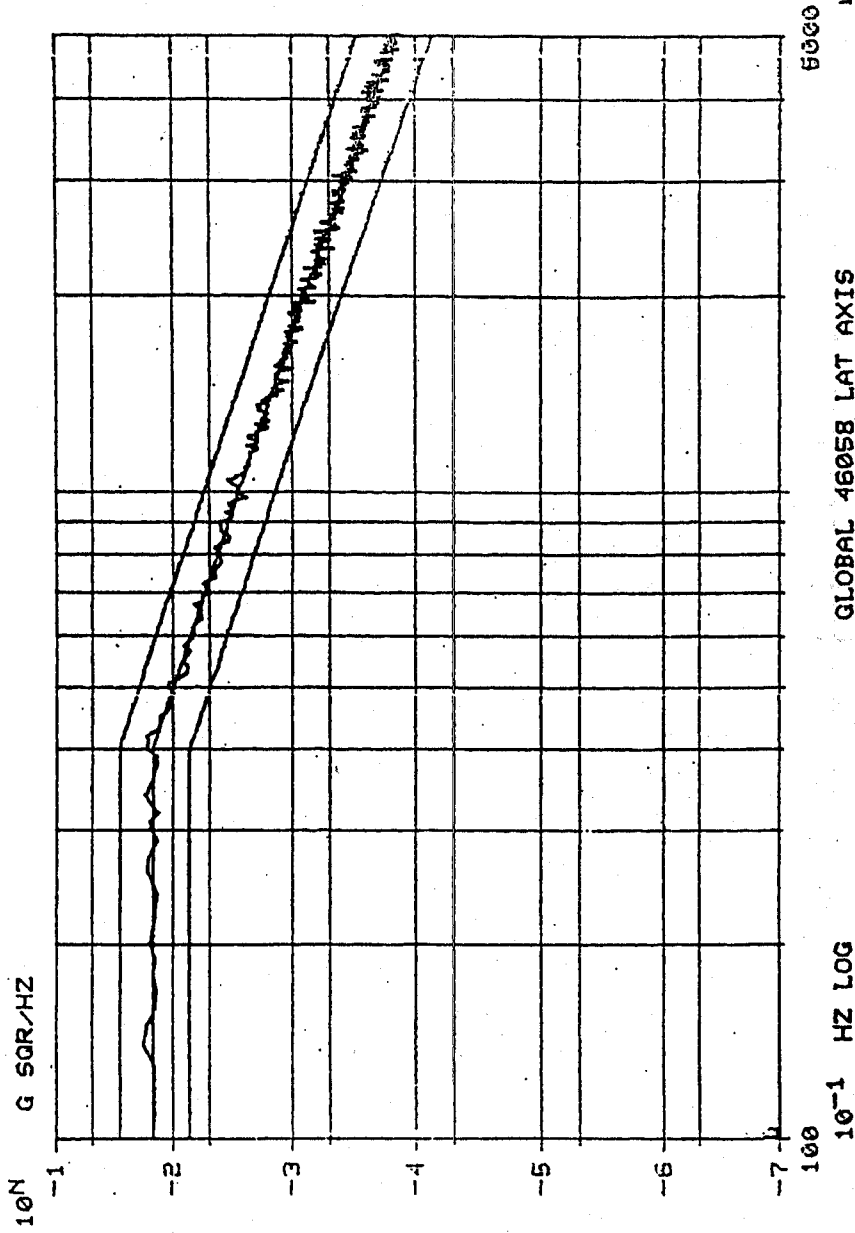
Approved [Signature] 12.27.01
 Signed [Signature] 7/18/01

xdcf5a RUN#1 A1 CONTROL AMB TEMP 7/17/01
POST TEST ELAPSED TIME = 1803 SECS AT .00 DB
RMS LEVEL = 1.044 G'S DELTA F = 1.000 DOF = 90 AWF = 8
10N G SCR/HZ

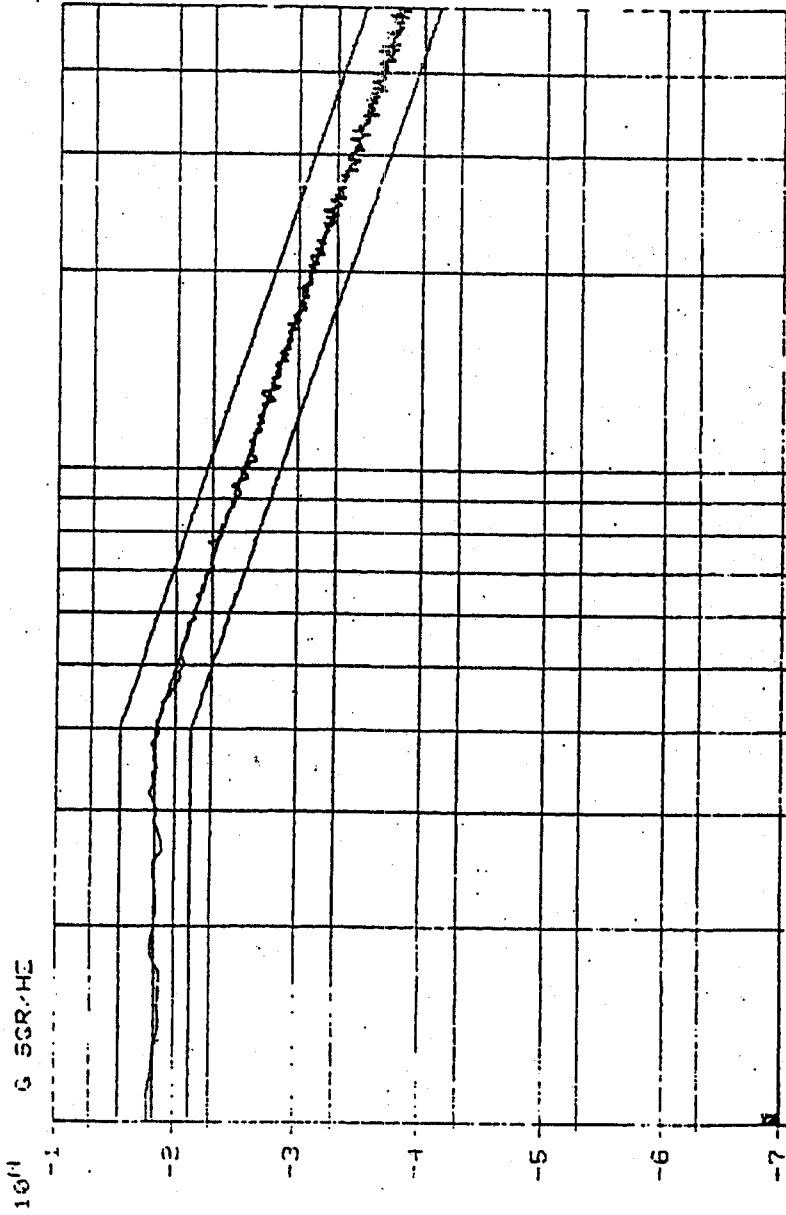


100 5000
10⁻¹ HZ LOG
GLOBAL 46058 LONG AXIS

xdcf5A RUN#2 A1 CONTROL AMB TEMP 7/17/01
POST TEST ELAPSED TIME = 1803 SECS AT .00 D3
RMS LEVEL = 1.046 G'S DELTA F = 1.000 DOF = 90 AWF = 3



RUN #3 A 1 CONTROL AMB TEMP 7-17-01
ELAPSED TIME = 1802 SECS AT .00 DB
RMS LEVEL = 1.036 G'S DELTA F = 1.000 DOF = 360 AUF = 8



100 10⁻¹ HZ LOG
5000
GLOBAL 46058-LAF AXIS
VERT
16. 7-17-01

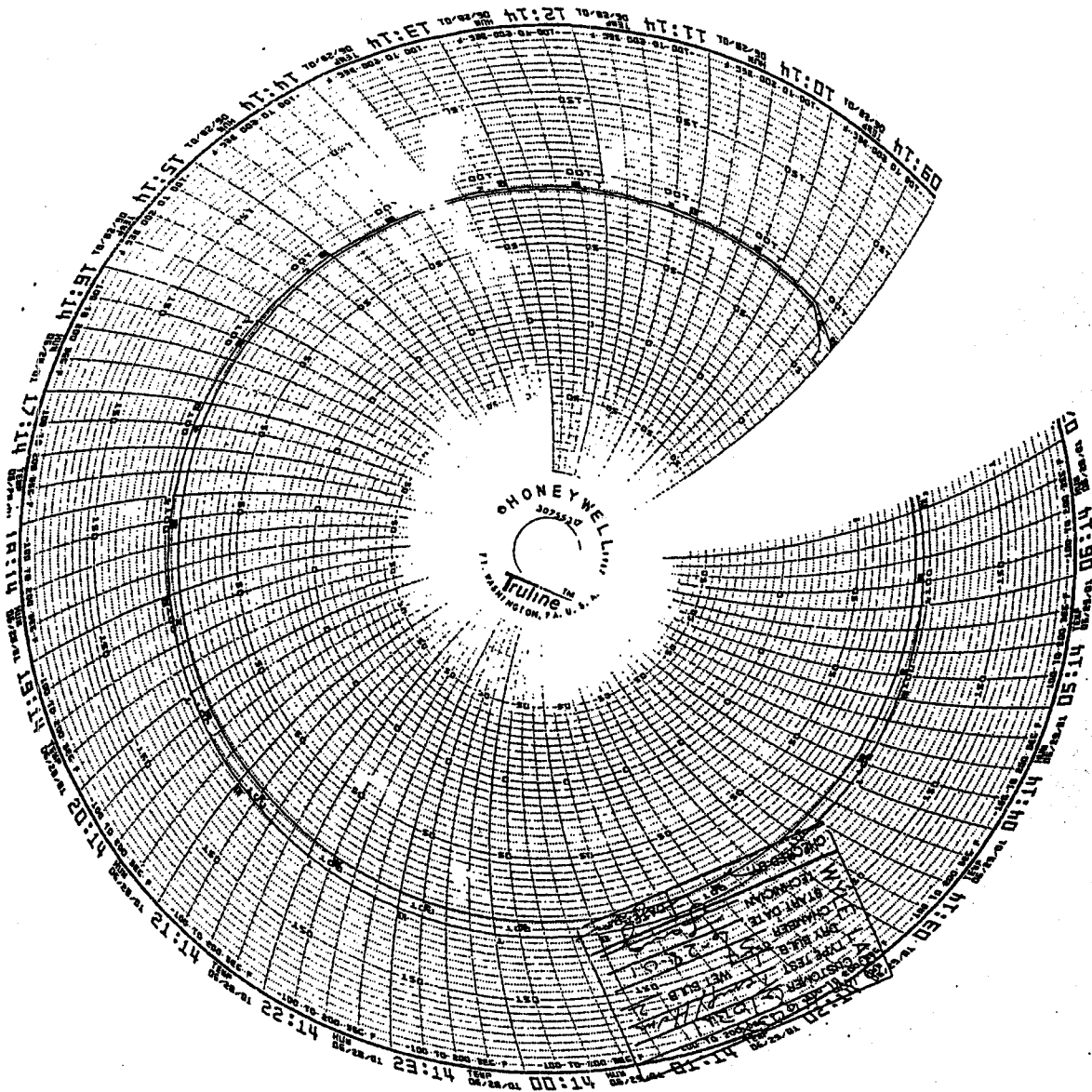
ATTACHMENT I
BENCH HANDLING DATA SHEET

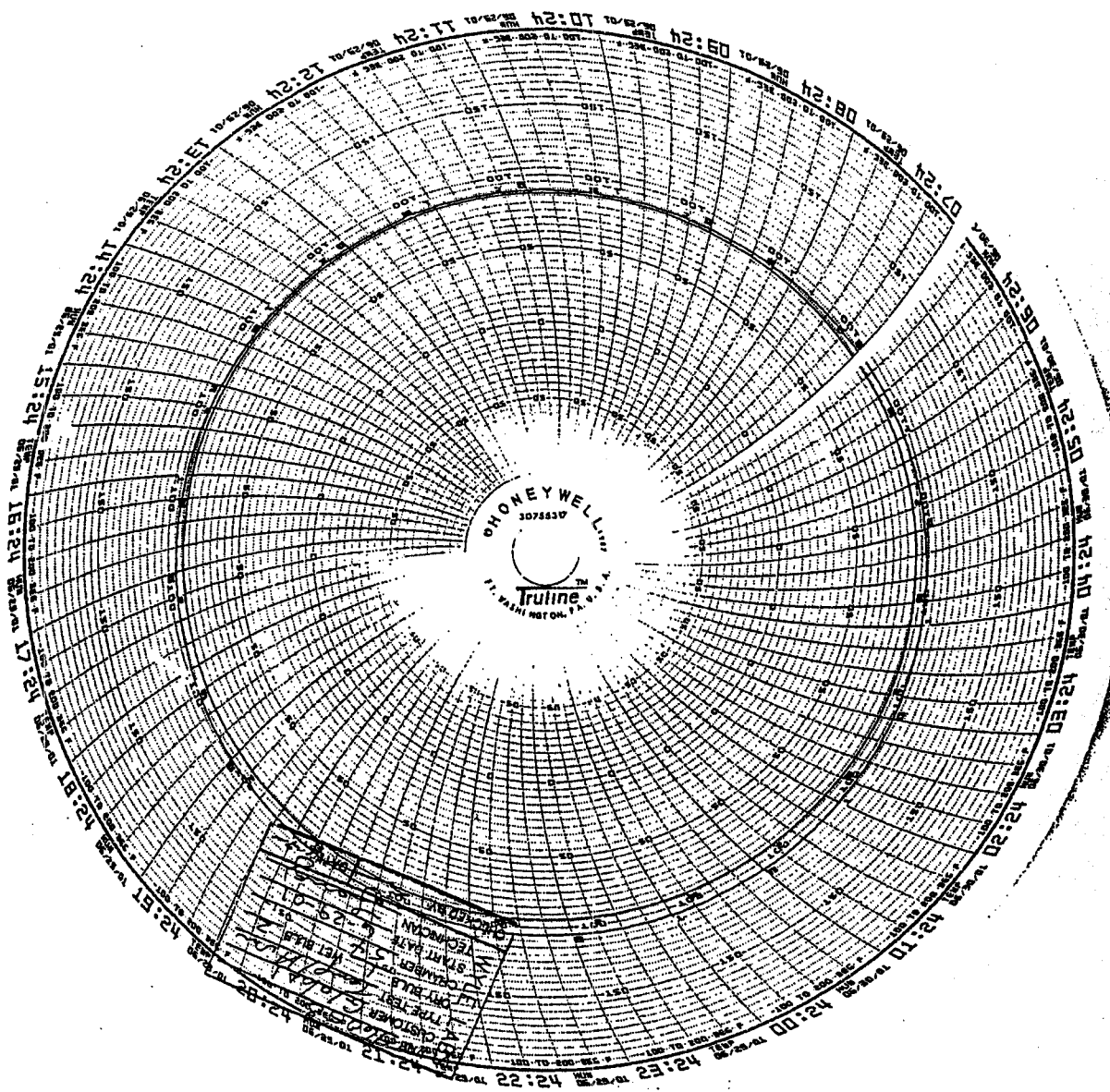
This page intentionally left blank.

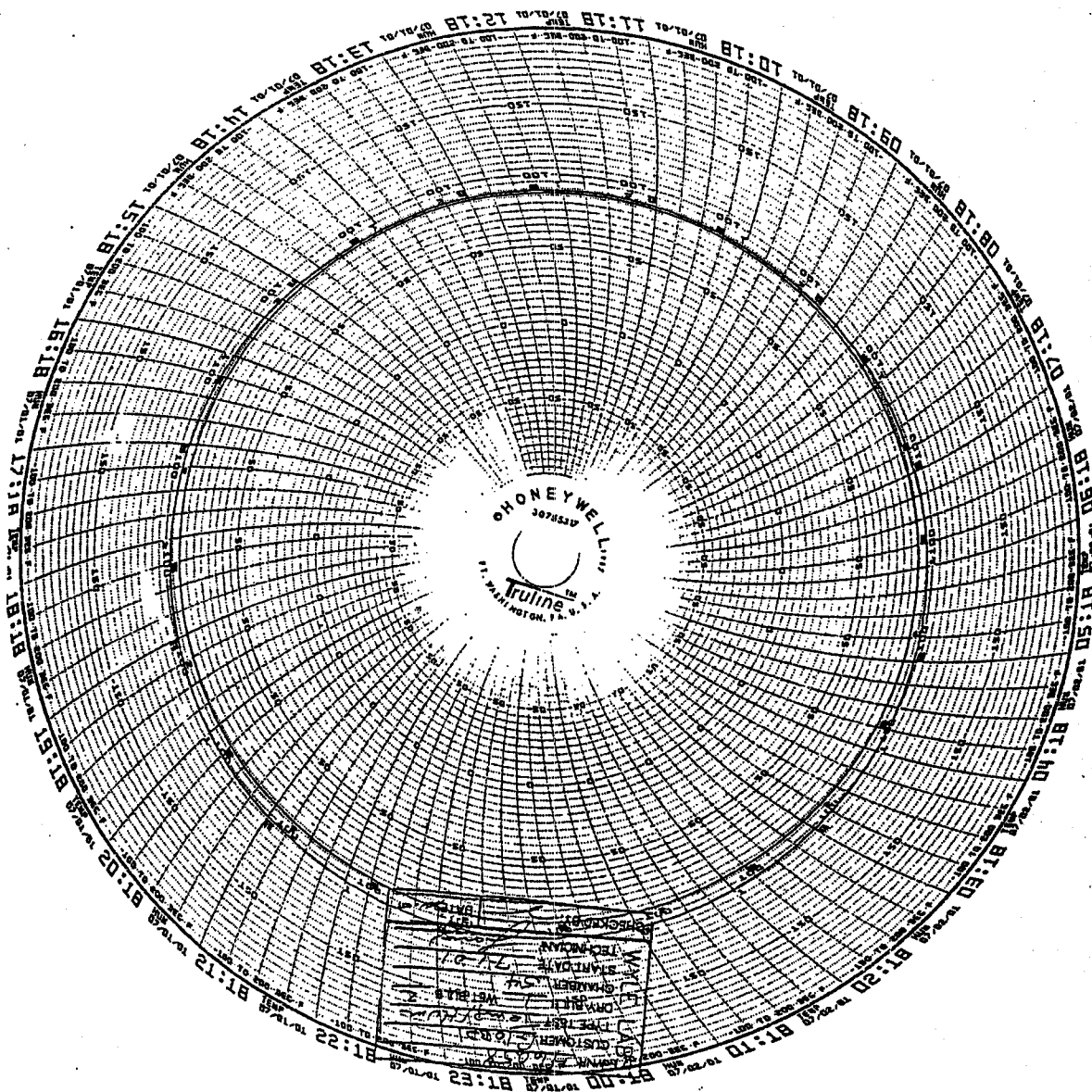
This page intentionally left blank.

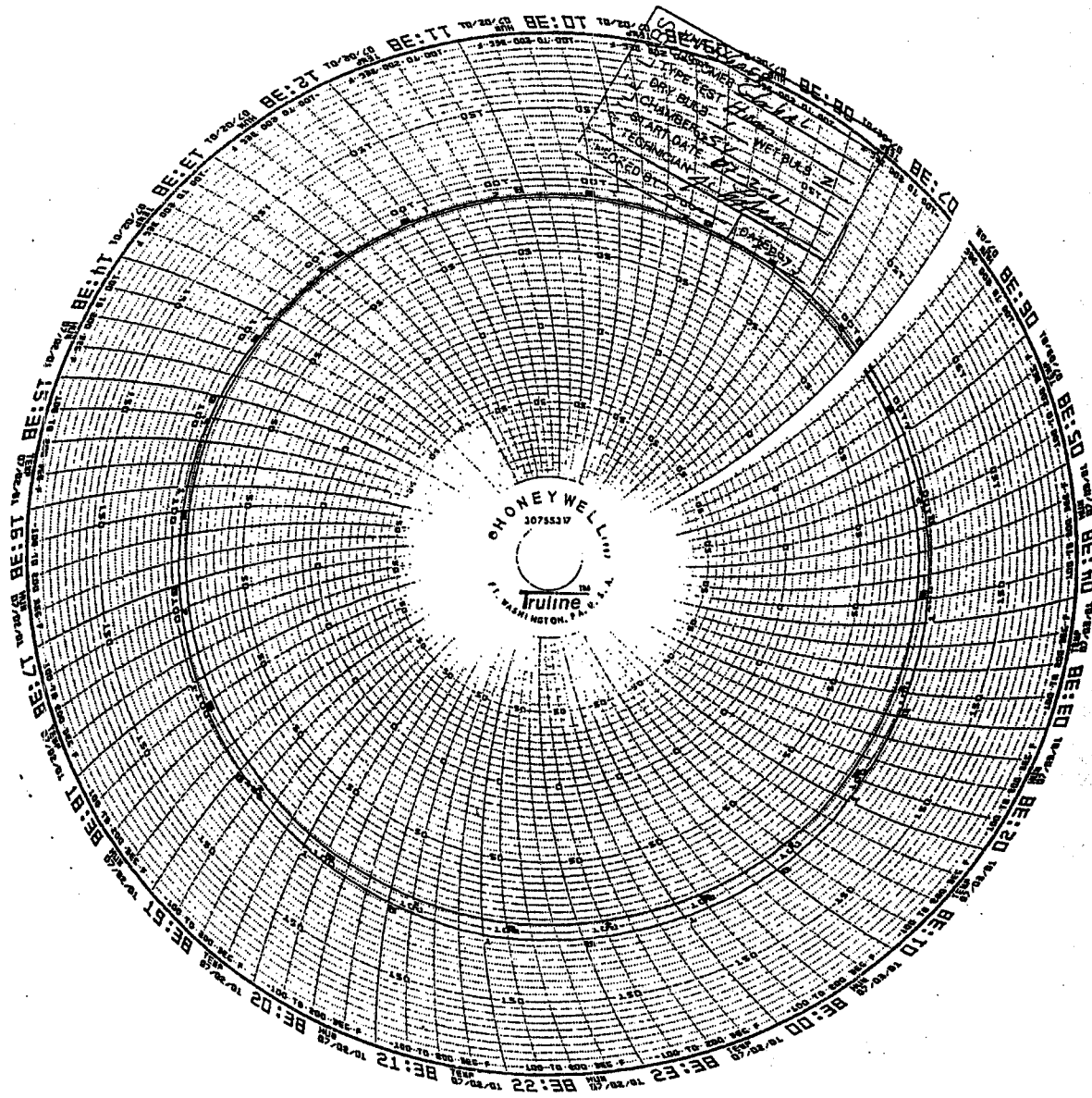
ATTACHMENT J
240-HOUR HUMIDITY THERMAL
CIRCULAR CHARTS

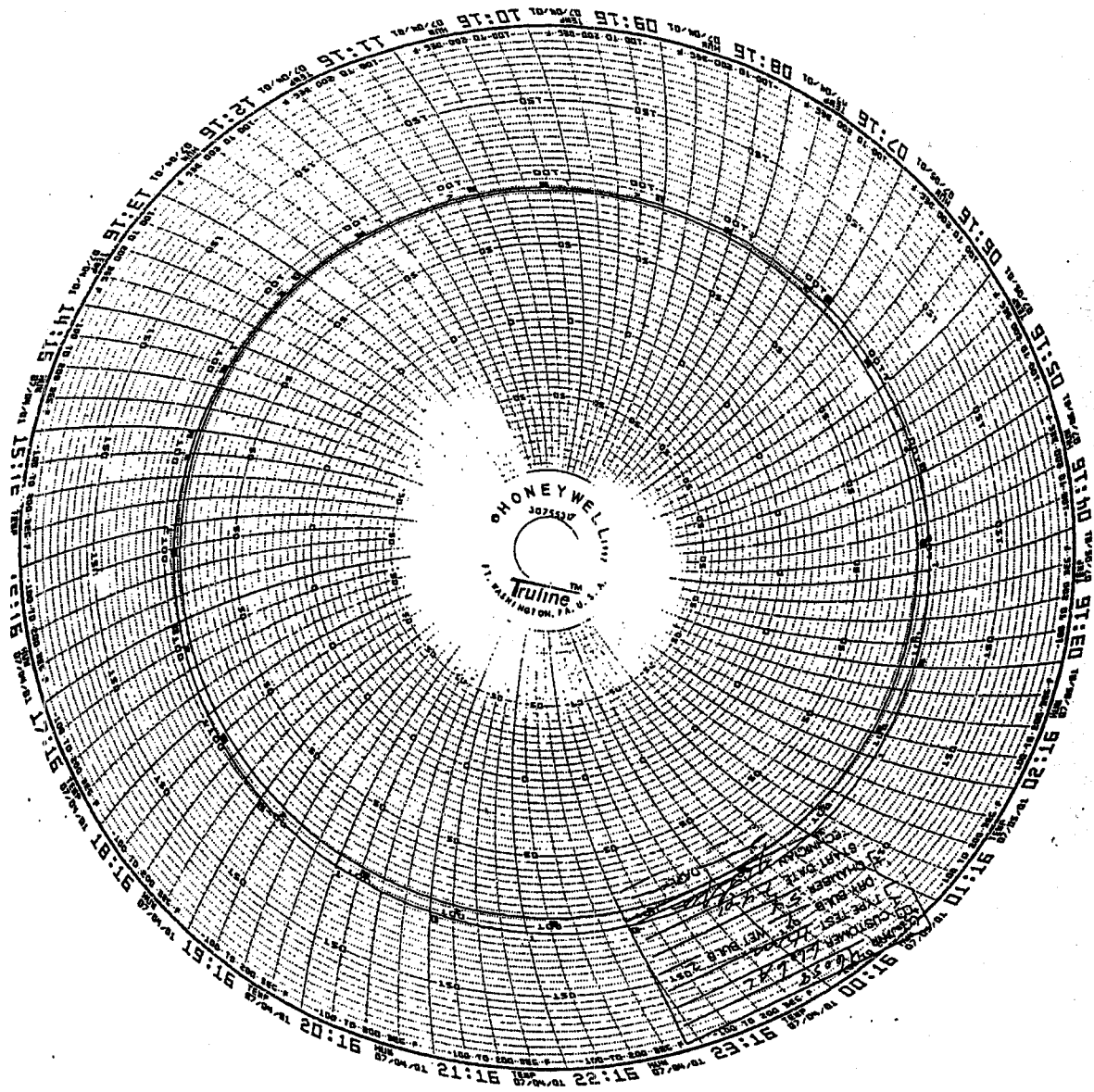
This page intentionally left blank.

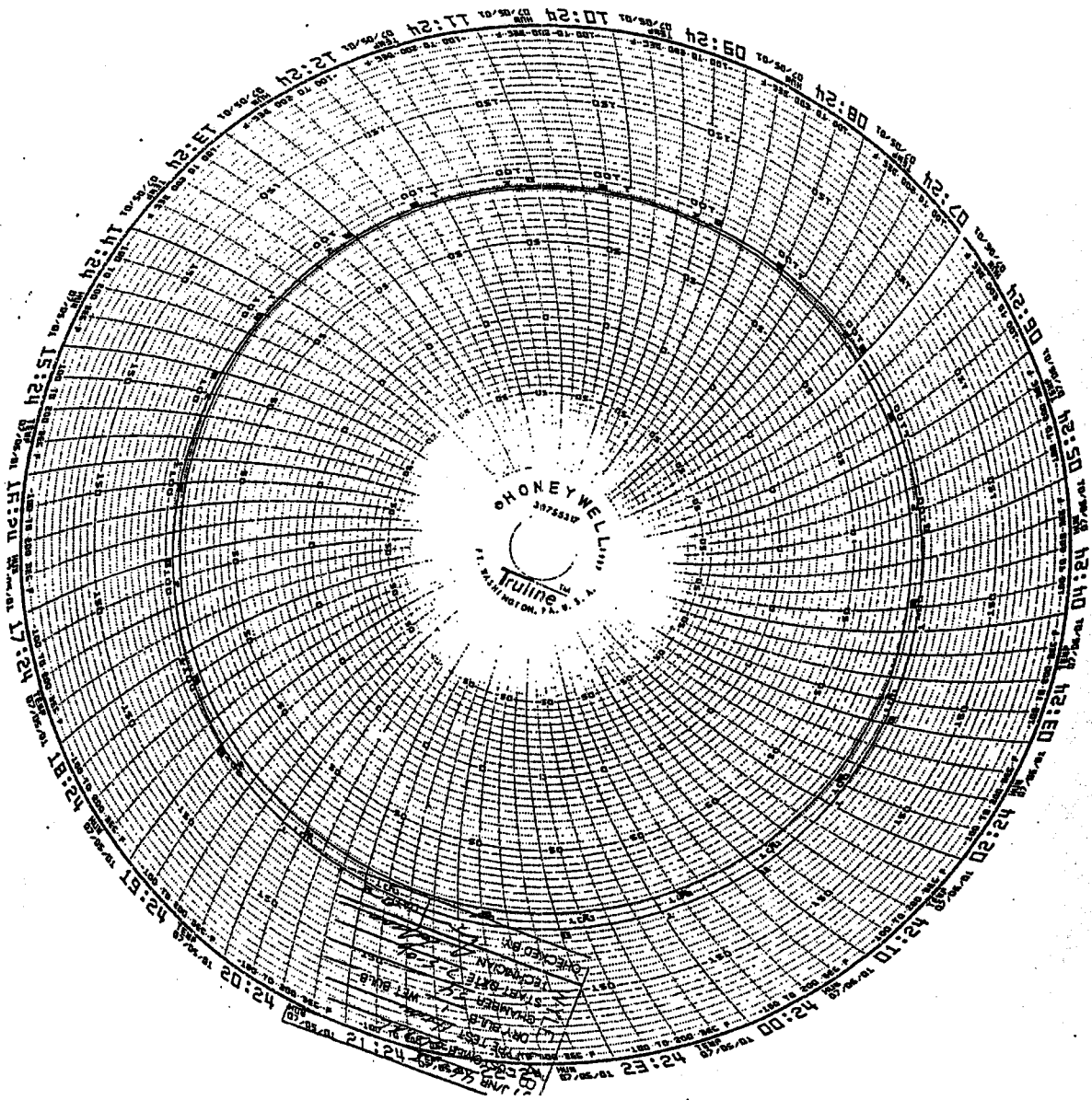


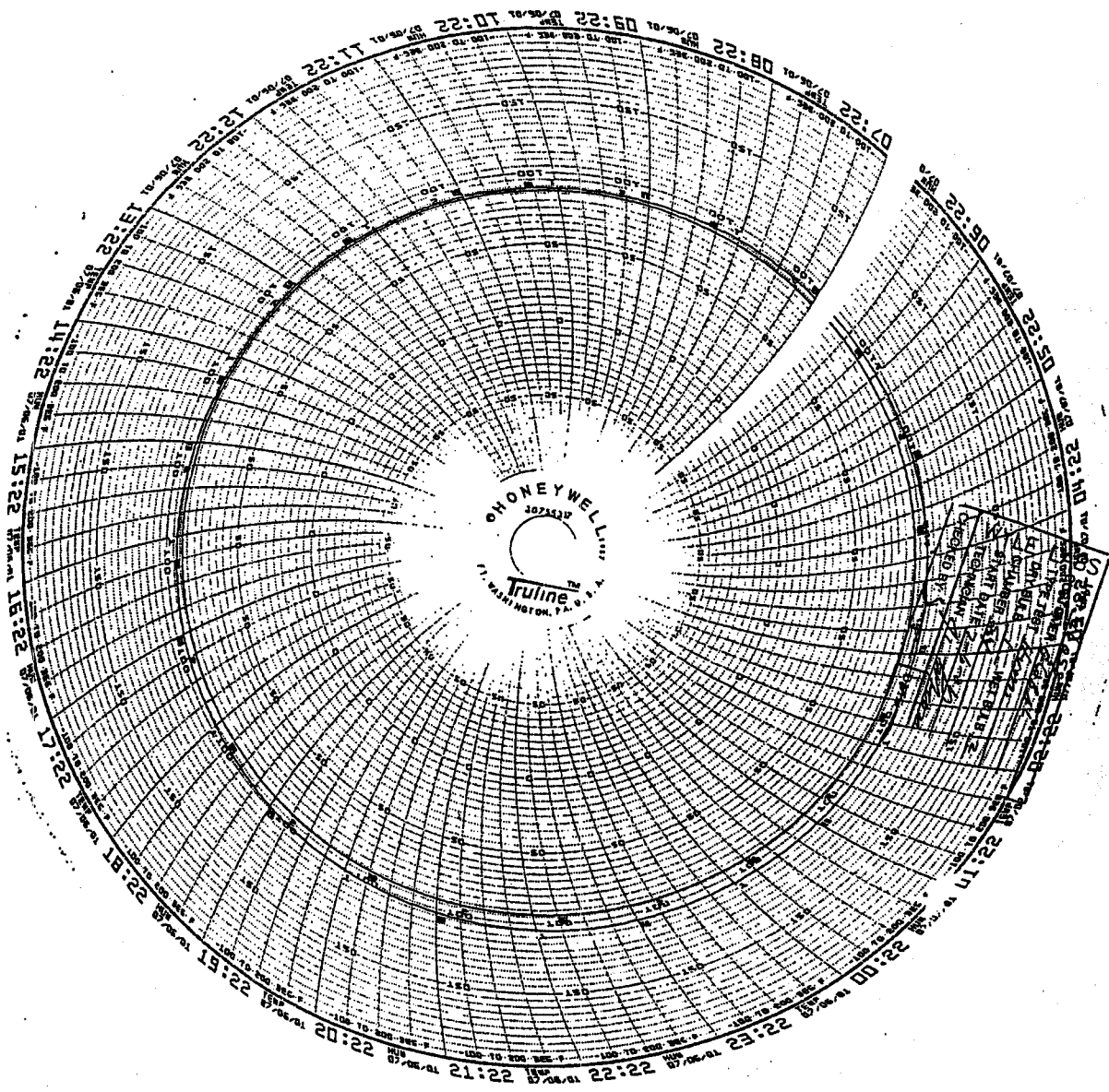


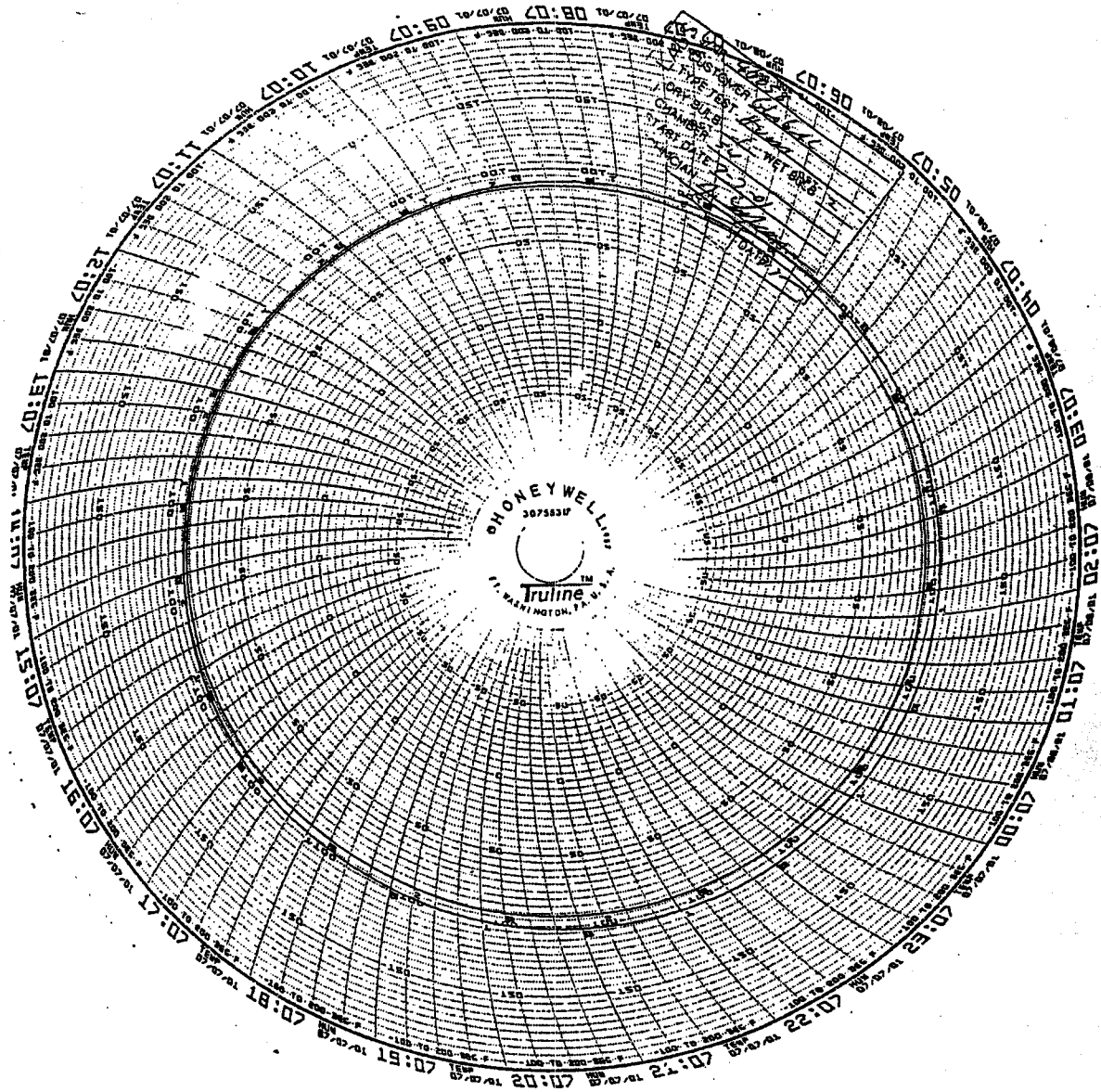


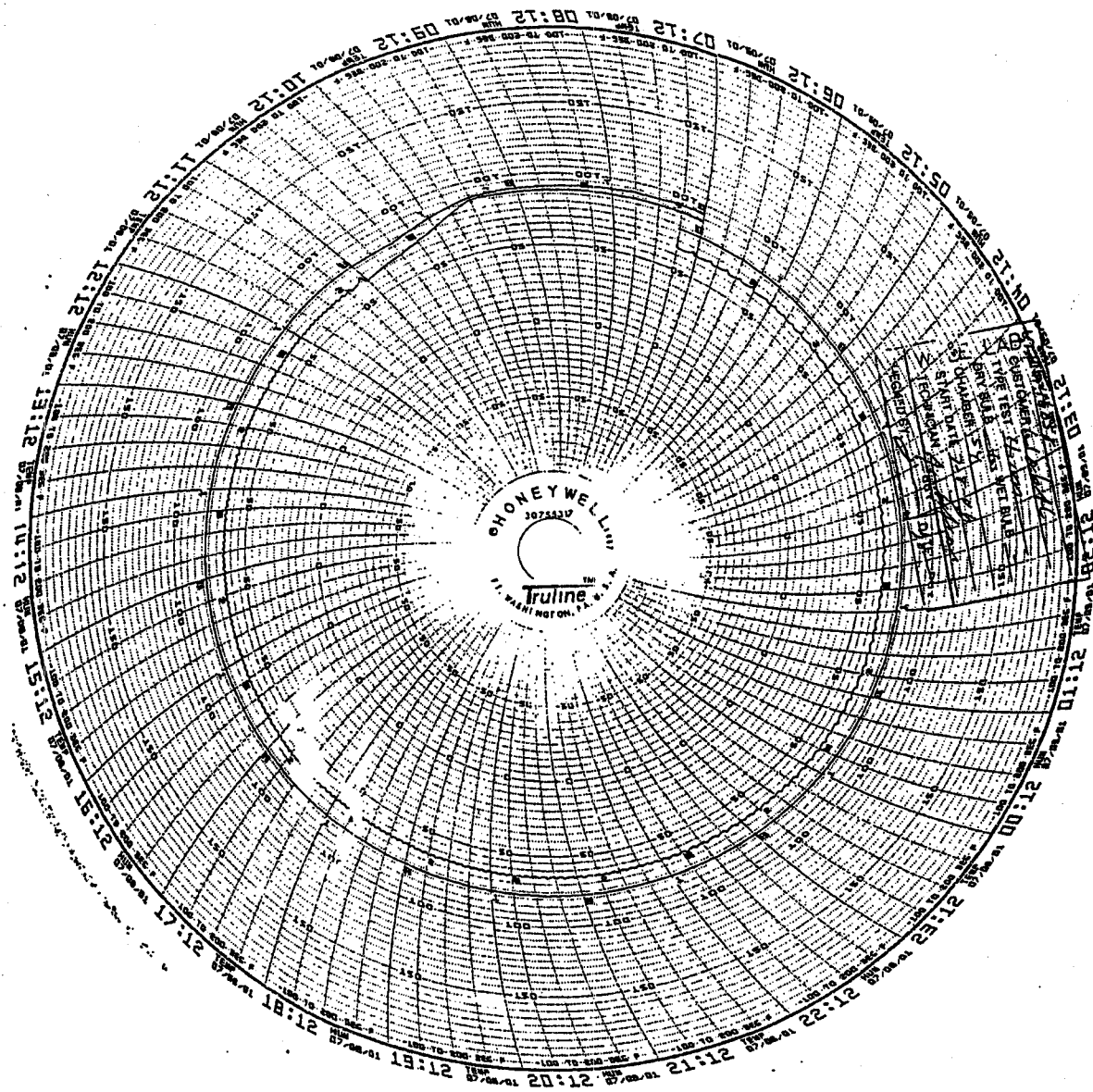












This page intentionally left blank.

ATTACHMENT K
RAIN EXPOSURE DATA SHEET

This page intentionally left blank.

This page intentionally left blank.